



DATASHEET

AUTOMATIC SCREW FEEDER NSRI

v1.1

1. Datasheet

1.1. Screw Feeder NSRI

| General property | Description/Value | Unit |
|---|--|-------------|
| Power AC adapter (switching type) | Input: AC 100~240 50/60 | [V] [Hz] |
| | Output: DC 15 1 | [V] [A] |
| Dimensions (W, D, H) | 123 x 181 x 145 | [mm] |
| | 4.8 x 7.1 x 5.7 | [inch] |
| Weight (including rail) | Approximately 3 | [kg] |
| | Approximately 6.6 | [lb] |
| Screw capacity | Approximately 300 cc | |
| Following accessories | Operation Manual 1 copy AC Adapter 1 unit Hexagonal wrench 1 piece Screwdriver 1 piece Ground wire 1 piece | |
| Installation location | Level stable place | |
| Operating and storage temperature | 0 - 40 | [°C] |
| Operating and storage humidity (without condensation) | 10 - 85 | [%] |
| Compliance standards | ECC: 2014/30/UE | |
| | RoHS: 2011/65/EU | |

| Reference table of the specified screws | | | | | Shape of screw head | | | | | | |
|---|--------------------------|-------------------------|---------------------------|-------------------------|---------------------|-------------|-------------|------|-----------|-------------------|---------------------|
| Screw size | Screw shaft diameter [Ø] | Screw head diameter [Ø] | Screw head thickness [mm] | Screw shaft length [mm] | Pan head | | | Bind | Flat head | Counter sunk head | Hexagon flange bolt |
| | | | | | Sems | Double sems | Washer head | | | | |
| M1.0 | 0.9 ~ 0.95 | 1.2 ~ 4.5 | 0.35 ~ 1.0 | 1.6 ~ 10 | | | | | x | | |
| M1.2 | 1.1 ~ 1.15 | 1.4 ~ 4.5 | 0.35 ~ 1.0 | 1.8 ~ 10 | | | | | x | | |
| M1.4 | 1.3 ~ 1.4 | 1.7 ~ 4.5 | 0.35 ~ 1.0 | 2.0 ~ 10 | | | | | x | | |
| M1.7 | 1.6 ~ 1.7 | 2.0 ~ 4.5 | 0.35 ~ 1.0 | 2.3 ~ 10 | | | | | x | | |
| M2.0 | 1.9 ~ 2.1 | 2.4 ~ 6 | 0.35 ~ 4.5 | 2.6 ~ 20 | x | x | x | x | x | x | x |

| Reference table of the specified screws | | | | | Shape of screw head | | | | | | |
|---|--------------------------|-------------------------|---------------------------|-------------------------|---------------------|-------------|-------------|------|-----------|-------------------|---------------------|
| Screw size | Screw shaft diameter [Ø] | Screw head diameter [Ø] | Screw head thickness [mm] | Screw shaft length [mm] | Pan head | | | Bind | Flat head | Counter sunk head | Hexagon flange bolt |
| | | | | | Sems | Double sems | Washer head | | | | |
| M2.3 | 2.2 ~ 2.4 | 2.7 ~ 6 | 0.35 ~ 4.5 | 2.9 ~ 20 | x | x | x | x | x | x | x |
| M2.6 | 2.5 ~ 2.7 | 3.0 ~ 6 | 0.35 ~ 4.5 | 3.2 ~ 20 | x | x | x | x | x | x | x |
| M3.0 | 2.9 ~ 3.2 | 3.5 ~ 6 | 0.35 ~ 4.5 | 3.6 ~ 20 | x | x | x | x | x | x | x |

**NOTE:**

Please consult your distributor for thin head.

Check if the axis diameter of the loaded screw corresponds with the below rail groove width.

With the range of screw size and lengths below, there may be instances of unique screw shape or structure not compatible with the screw feeder unit.

In the main body type, the main body model can be changed.

To change the nominal diameter of loaded screw, replace it with a part that is mentioned in the next page table.

The rail, escaper, robot escaper guide and passing plate are separately available for replacement.

The design, performance and specifications are subject to change without prior notice for the sake of improvement.

The noise of this unit is less than LAeq 70 dB at a distance of 1 m.

This product complies with EC directive. Please check the EC Declaration of Conformity for compliance standards.

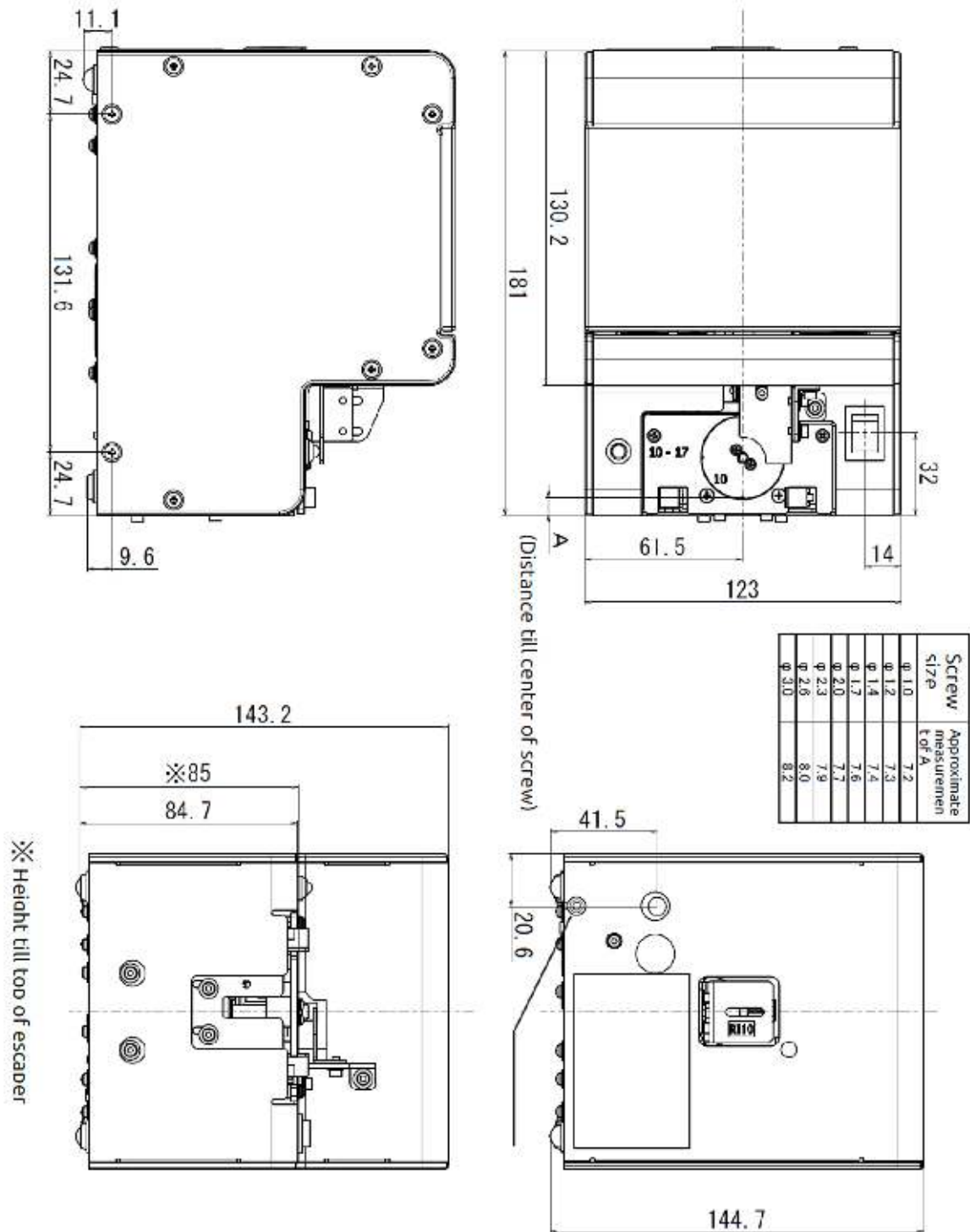
| Screw feeder series | Screw feeder model | Screw size | Exchange kit No. | Rail model No. | Escaper model No. | Robot escaper guide model No. | Passing plate model No. |
|---------------------|--------------------|------------|-------------------|----------------|-------------------|-------------------------------|-------------------------|
| NSRI | NSRI10 | M1.0 | RI10SET (T213) | RI10 | TOKX0239 #01 | TOKX0240 #01 | SW1017 |
| | NSRI12 | M1.2 | RI12SET (T213) | RI12 | TOKX0239 #02 | | |
| | NSRI14 | M1.4 | RI14SET (T213) | RI14 | TOKX0239 #03 | | |
| | NSRI17 | M1.7 | RI17SET (T213) | RI17 | TOKX0239 #04 | | |
| | NSRI20 | M2.0 | RI20SET (T213) | RI20 | TOKX0239 #05 | TOKX0240 #02 | SW2030 |
| | NSRI23 | M2.3 | RI23SET (T213) | RI23 | TOKX0239 #06 | | |
| | NSRI26 | M2.6 | RI26SET (T213) | RI26 | TOKX0239 #07 | | |
| | NSRI30 | M3.0 | RI30SET (T213) | RI30 | TOKX0239 #08 | | |

**NOTE:**

In the Exchange kit ordered, Rail assembly, Escaper, Robot escaper guide and Passing plate are included.

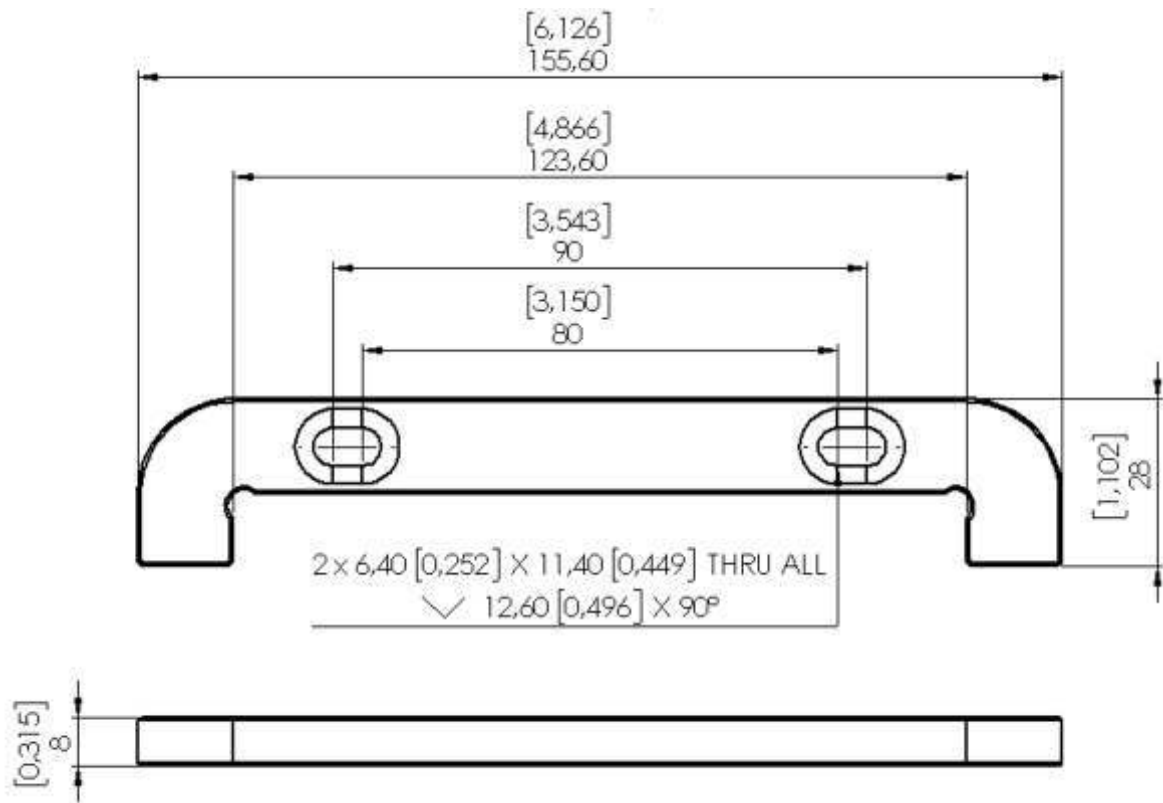
Please contact us by “~ SET” type when you need rail.

1.2. Screw Feeder NSRI



All dimensions are in mm.

1.3. Screw Feeder NSRI - Mounting Fixture



All dimensions are in mm and [inches].